

## THE PHARMA INNOVATION - JOURNAL

# Risk factors and clinical features of severe fever with thrombocytopenia syndrome

**Dr. Indrasen Reddy Kankanala**

1. Assistant Professor, Department of General Medicine, Malla Reddy Institute of Medical Sciences, Hyderabad, Telangana, India

---

**Purpose:** This study was to investigate the clinical characteristics and laboratory parameters of severe fever with thrombocytopenia syndrome (SFTS).

**Patients and Methods:** A detailed retrospective analysis of clinical records for SFTS patients was conducted. Fifty-one cases confirmed SFTS virus infected were enrolled. The clinical characteristics and laboratory parameters between survivors and non-survivors were analyzed.

**Results:** All patients aged between 30 and 80 years were farmers or residing in wooded and hilly areas. All patients occurred between. The major clinical manifestations were fever, fatigue, diarrhea, myalgia, nausea and vomiting. Conscious disturbance, lymph node enlargement and hemorrhage were common. Fatal outcome occurred in 31.4% (16/51) of patients. Compared with survivors group, in non-survivors group, the proportion of consciousness disturbance, age, the levels of AST, LDH, Bun, Cr, PT and APTT were significantly increased, and PLT was significantly decreased. The age, PLT, AST, LDH, Cr, PT and APTT were the risk factors for fatal outcomes. Moreover, the age (OR, 1.245; 95% CI, 1.052-1.474) and APTT (OR, 1.095; 95% CI, 1.005-1.192) were the independent risk factors for fatal outcomes. Heteromorphic lymphocyte and hemophagocytosis could be found in SFTS patients, especially the proportion of finding hemophagocytosis was significantly higher in non-survivors group compared with survivors group.

**Conclusion:** These results suggest SFTS is a systemic infection, the age and APTT can be used as potential predictors referring to severe SFTS cases.

---

**Keyword:** Severe fever with thrombocytopenia syndrome; SFTS, hemophagocytosis, laboratory parameters, risk factors

### Introduction

Severe fever with thrombocytopenia syndrome (SFTS) is an emerging infectious disease firstly described in rural areas of Cindia, and caused by SFTS virus (SFTSV), a novel tick-borne virus classified into *Bandavirus* genus, *Phenuiviridae* family, *Bunyavirales* order<sup>[1, 2]</sup>. The disease has been recognized in Japan and South Korea since 2013<sup>[3, 4]</sup>. Recent years, SFTS cases has also been

reported in Taiwan, Vietnam and Myanmar, indicating a broader global distribution<sup>[5-7]</sup>. The major clinical manifestations of SFTS include acute fever ( $\geq 38$  °C), thrombocytopenia, leucopenia, gastrointestinal symptoms, central nervous system symptoms, even disseminated intravascular coagulation and multiple organ dysfunctions. The average mortality rate of SFTS is 16.2%, with higher risk to elder people in

China [8]. And Nanjing, located on the border between Jiangsu and Anhui provinces, is a high incidence area of SFTS [9]. Therefore, We retrospectively analyze the SFTS patients at Zhongda hospital in Nanjing, between January 2013 and January 2019, summarize the clinical characteristics and laboratory parameters, and identify useful markers to predict disease severity.

**Table 1:** Information and Clinical Characteristics of SFTS

Characteristics	SFTS, n=51 (%)
Gender (Male/Female)	27/24
Age, years (median; range)	61 (30-80)
Tick bite/contact/unclear	9/3/39
Cases from Apr. to Oct.	4/15/10/9/6/4/3
Fever	51 (100)
Fatigue	39 (76.47)
Nausea	22 (43.14)
Vomiting	16 (31.37)
Diarrhea	25 (49.02)
Myalgia	24 (47.06)
Consciousness disturbance	29 (56.86)
Superficial lymph node	24 (47.06)
Hemorrhage	27 (52.94)

## Patients and Methods

### Study Patients

A total of 51 laboratory-confirmed cases were from Malla reddy Institute of Medical Sciences. The complete medical records were obtained and reviewed to analyze clinical characteristics and laboratory parameters. We also divided the patients into survivors group and non-survivors group, comparing clinical and laboratory features. This study was approved by the research ethics committee of Malla reddy Institute of Medical Sciences. The requirement to obtain written informed consent from each patient was waived because this was an observational

retrospective study. The patients' information were anonymous and non identifiable.

### Statistical Analysis

Data were represented as medians and ranges. Continuous variables were performed using Mann-Whitney *U*-tests and categorical variables were compared using Chi-square test or Fisher's exact test (theoretical frequency <5). All significance tests were two-tailed and *P* values <0.05 were considered statistically significant. Binary logistic regression analysis was performed to identify the risk factors for mortality of SFTS, variables with *P* value <0.05 were entered into the multivariate model by method of enter. All analyses were performed using SPSS (SPSS Inc., Chicago, IL, USA).

## Results

### Clinical, Demographic and Epidemiologic Condition of Patients

All 51 SFTS patients aged between 30 and 80 years were farmers or residing in wooded and hilly areas. And all cases occurred between April and October (Table 1). Though we found a tick from one patient (Figure 1), most cases did not realize that they had been bitten.



**Fig 1:** A patient bitten by a tick. The location of bite is under left knee (A and B); Tick morphology under microscope ( $\times 40$ ) (C).

**Table 2:** Symptoms and Sign of SFTS Patients Between Survivors and Non-Survivors

	Survivors, n=35 (%)	Non-Survivors, n=16 (%)	P value
Fatigue	29 (82.86)	10 (62.50)	0.157 <sup>a</sup>
Nausea	16 (45.71)	6 (37.50)	0.583
Vomiting	10 (28.57)	6 (37.50)	0.524
Diarrhea	16 (45.71)	9 (56.25)	0.485
Myalgia	18 (51.43)	6 (37.50)	0.355
Consciousness disturbance	13 (37.14)	16 (100)	<0.001
Superficial lymph node	14 (40.00)	10 (62.50)	0.135
Hemorrhage	16 (45.71)	11 (68.75)	0.126

**Note:** <sup>a</sup>Fisher's exact test (2-sided).

### Symptoms and Sign

As shown in Table 1, the major clinical manifestations of SFTS were fever (100%), fatigue (76.47%), diarrhea (49.02%), myalgia (47.06%), nausea (43.14%) and vomiting (31.37%). The symptoms of central nervous system characterized by conscious disturbance

were found in 29 cases (56.86%). Lymph node enlargement and hemorrhage were common. The proportion of consciousness disturbance was significantly higher in non-survivors group compared with survivors group, but other clinical manifestations showed no difference (Table 2).

**Table 3:** Clinical Data of Survivors and Non-Survivors with SFTS Patients

	Survivors (n=35, Median; Range)	Non-Survivors (n=16, Median; Range)	Mann-Whitney U-test (Exact Sig.) P value	Reference Range
Age	53 (30-79)	67.5 (50-80)	0.001	
WBC	1.70 (0.82-5.60)	1.90 (0.80-3.22)	0.453	3.5-9.5
N	1.02 (0.43-4.29)	1.03 (0.40-2.40)	0.584	1.8-6.3
L	0.51 (0.20-1.58)	0.49 (0.21-1.31)	0.964	1.1-3.2
HB	106 (45-151)	117 (45-162)	0.331	130-175
PLT	30 (8-75)	16 (6-55)	0.009	125-350
ALT	162 (24-369)	190 (45-2593)	0.290	5-44
AST	297 (70-1488)	1070 (131-7500)	<0.001	5-40
CK	1052 (51-6329)	1693 (225-6118)	0.072	0-171
LDH	1403 (230-4358)	2041 (502-9362)	0.010	120-220
Bun	6.1 (1.90-59)	12.40 (4.20-37)	<0.001	2.9-7.2
Cr	76 (38-375)	168 (46-697)	0.001	53-132
PT	11.9 (10.4-19.4)	14.1 (11.7-34.1)	0.001	9.6-13.7
APTT	46.9 (31.2-96.9)	80.9 (41.9-146.8)	<0.001	20-40
FIB	2.17 (1.04-6.66)	1.78 (1.30-2.54)	0.106	2-4
D-Dimer	3390 (845-50000)	10,965 (230-40000)	0.171	0-500
SF <sup>a</sup>	7947 (297-22634)	12,707 (643-37335)	0.295	23.9-336.2

**Note:** Only 22 survivors and 9 non-survivors patients were examined for SF test.

**Abbreviations:** WBC, white cell count; N, neutrophil count; L, lymphocyte count; HB, hemoglobin; PLT, platelet count; ALT, alanine aminotransferase; AST, aspartate aminotransferase; CK, creatine phosphokinase; LDH, lactate dehydrogenase; Bun, blood urea nitrogen; Cr, creatinine; PT, prothrombin time; APTT, activated partial thromboplastin time; FIB, fibrinogen; SF, serum ferritin.

### Laboratory Parameters

As shown in Table 3, the non-survivors group were found to have significantly increased age, and increased levels of aspartate aminotransferase (AST), lactate dehydrogenase (LDH), prothrombin time (PT) and activated partial thromboplastin time (APTT), also have renal function deprivation. Platelet count (PLT) was significantly decreased in non-survivors group.

### Risk Factors for Mortality in SFTS Patients

Univariate logistic regression analysis was performed to identify the risk factors for mortality of SFTS patients (Table 4). The age, PLT, AST, LDH, creatinine (Cr), PT and APTT were the risk factors for fatal outcomes. These variables were used for a multivariate logistic regression analysis, and the result indicated that the age (OR, 1.245; 95% CI, 1.052-1.474;  $P=0.011$ ) and APTT (OR, 1.095; 95% CI, 1.005-1.192;  $P=0.038$ ) were the independent risk factors for fatal outcomes.

### Morphological Changes of Bone Marrow in SFTS Patients

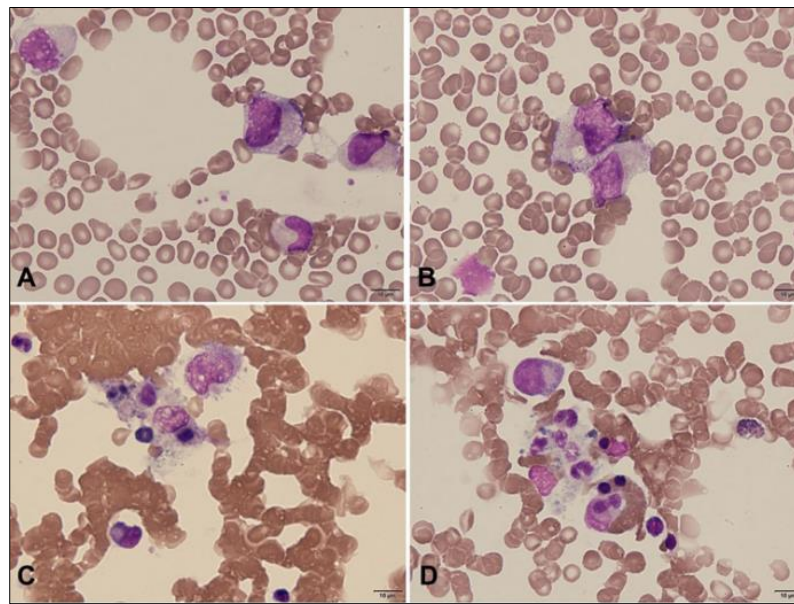
Bone marrow examinations were performed in 23 patients including 14 survivors and 9 non-survivors. Heteromorphic lymphocyte and hemophagocytosis could be found in SFTS patients (Figure 2.). And the proportion of heteromorphic lymphocyte and hemophagocytosis were more common in non-survivors group, especially the proportion of finding hemophagocytosis was significantly higher in non-survivors group compared with survivors group (Table 5.).

### Discussion

SFTSV has been detected in patients from India. Generally, tick bite is a risk factor associated with SFTSV infection. However, many cases are unclear whether they had tick bite histories because of being unfamiliar with ticks or painless bites<sup>[10]</sup>. Although most cases occur through tick bites, clusters of SFTS in family member or healthcare personnel also have been reported.

**Table 4:** Risk Factors of Mortality in SFTS Patients

Factors	Univariate Model		Multivariate Model	
	OR (95% CI)	P value	OR (95% CI)	P value
Age, years	1.103 (1.032-1.179)	0.004	1.245 (1.052-1.474)	0.011
WBC	1.005 (0.497-2.240)	0.889		
N	0.621 (0.184-2.093)	0.443		
L	1.120 (0.151-8.316)	0.912		
HB	1.011 (0.987-1.036)	0.368		
PLT	0.939 (0.890-0.991)	0.022	1.048 (0.944-1.163)	0.379
ALT	1.003 (1.000-1.007)	0.089		
AST	1.003 (1.001-1.004)	0.003	1.002 (0.999-1.005)	0.197
CK	1.000 (1.000-1.001)	0.109		
LDH	1.001 (1.000-1.001)	0.006	1.000 (0.999-1.001)	0.621
Bun	1.078 (0.996-1.165)	0.061		
Cr	1.012 (1.002-1.021)	0.019	1.015 (0.995-1.036)	0.146
PT	1.404 (1.043-1.890)	0.025	1.385 (0.787-2.436)	0.259
APTT	1.094 (1.039-1.151)	0.001	1.095 (1.005-1.192)	0.038
FIB	0.376 (0.121-1.171)	0.092		
D-dimer	1.000 (1.000-1.000)	0.097		



**Fig 2:** Morphological changes of bone marrow aspiration smear from patients with SFTS (Wright-Giemsa stain,  $\times 1000$ ). Heteromorphic lymphocyte ( $> 5\%$ ) from two different survival patients (A and B). Activated histiocytes containing multiple blood cells from two different death patient (C and D).

Person-to-person transmission of SFTSV occurs rarely through contact with infected blood, bloody respiratory secretions, cadaveric blood [11, 12] and probable aerosol, [13, 14] which highlight the importance of adding universal pre- caution including airborne precaution and full personal protective equipment.

Like other studies, [15] except for abnormal blood routine, our data also have shown alanine aminotransferase (ALT), AST, LDH, creatine phosphokinase (CK), D-Dimer, APTT and serum ferritin are elevated. They are all useful laboratory markers though lack specificity. SFTS is easily mis- diagnosed as hemorrhagic fever with renal syndrome because of similar clinical features characterized by fever, diarrhea, myalgia, thrombocytopenia and abnormal coagulation [16].

**Table 5:** Heteromorphic Lymphocyte and Hemophagocytosis in Patients' Bone Marrow

	Survivors, n=14 (%)	Non-Survivors, n=9 (%)	P value
Heteromorphic lymphocyte $> 5\%$	8 (57.14)	8 (88.89)	0.176 <sup>a</sup>
Hemophagocytosis	2 (14.29)	6 (66.67)	0.023 <sup>a</sup>

**Note:** <sup>a</sup>Fisher's exact test (2-sided).

However, SFTS has its own characteristics. In our data, all SFTS cases occurred from April to October, about a half patients had consciousness disturbance. Significantly, SFTS rarely induced severe kidney injury, only 13 of 51 patients suffered from renal dysfunction, most of them were in non-survivor group, complicated with multiple organ dysfunction syndrome. Besides, owing to leukopenia, thrombocytopenia and abnormal coagulation function, some SFTS patients can be suspected of leukemia, especially hypoproliferative acute promyelocytic leukemia. However, acute leukemia patients usually does not have extremely elevated ALT, AST and CK, which are markers indicating liver and muscle injury. And according to the result of bone marrow aspirate, these two diseases can be finally identified.

Ding *et al* reported the incidence rate of SFTS was significantly higher in patients over 40 years old and fatal cases only occurred in patients over 50-years-old [17]. This is consistent with our data. Moreover, APTT, as another independent risk factors for fatal outcomes, indicated the coagulation disorder caused by SFTS virus might be related to disease severity.

SFTSV can inhibit the host immune response, leading to rapid virus replication, affect multiple organs, causing conscious disturbance, liver dysfunction, coagulation dysfunction and rhabdomyolysis. The mechanism remains unclear, potential reason may include direct organ invasion by virus and immune mediated inflammatory process [18, 19]. SFTSV can target microvascular endothelium, resulted in hyperpermeability owing to the disruption of intercellular junction, causing cytokine storm [20]. SFTSV-infected endothelium also can capture circulating platelets, adhere to white blood cells and transmigrate them into interstitial space, contributing to leukopenia and thrombocytopenia [21]. Some studies suggest cytokine storm might be associated with disease severity [22, 23]. For instance, many cytokines are significantly higher in SFTS patients than in healthy controls [23]. SFTSV infection-induced cytokine storm indirectly triggers consciousness disturbance [24]. More than half of patients suffered consciousness disturbance in our data. In clinical settings, steroid pulse therapy and plasma exchange are widely used to suppress excessive cytokine production, showing some visible effects [24, 25]. Meanwhile, cytokine storm can contribute to hemophagocytic lymphohistiocytosis (HLH) [4, 26]. Takahashi *et al* reported that five SFTS patients who underwent bone marrow aspirate, all exhibited hemophagocytosis which was also observed in lymph nodes and spleen [4]. Jung *et al* suggested SFTS cases complicated by HLH have a worse prognosis [27]. In our data, bone marrow aspirate was performed in 23 patients. Heteromorphic lymphocyte can be found in more than half of surviving patients. More hemophagocytosis occurs in death group. Therefore, HLH might be a critical pathogenesis in fatal cases of SFTS [28]. Recent study showed SFTSV could adhere to platelets and facilitate the phagocytosis of platelet by mouse primary macrophages [29]. Furthermore, SFTSV RNA could be detected in cytoplasm of phagocytosing macrophages in bone marrow, liver, and spleen during the autopsy process, indicating that SFTSV infected macrophages may induce hemophagocytosis and cause a cytokine storm,

which leads to viral hemorrhagic fever, even death [28]. Therefore, bone marrow examination should be done in patients to identify hemophagocytosis.

This study had some limitations. First, the sample size was small, which limited the accuracy of the observation and conclusion. Second, we had not the data of viral load, so that we could not analyze the impact of viral load on survival. Third, the hospital collecting cases was the local central hospital, many cases were transferred from county hospitals and were in serious condition, so the mortality (31.4%) was higher than other reports (16.2%) [8].

### Conclusion

SFTS is characterized by disturbance of consciousness, myalgia, abnormal coagulation function and rare severe renal injury. The age and APTT are useful markers for fatal cases. As a prevalent endemic disease in East Asia accompanied by high mortality, the identified clinical and laboratory parameters may predict fatal outcome, and new treatment strategies such as effective vaccine or anti-inflammatory therapy are needed.

### References

1. Yu XJ, Liang MF, Zhang SY, *et al*. Fever with thrombocytopenia associated with a novel bunyavirus in China. *N Engl J Med*. 2011;364(16):1523-1532. DOI:10.1056/NEJMoa1010095.
2. Kim KH, Yi J, Kim G, *et al*. Severe fever with thrombocytopenia syndrome, South Korea, 2012. *Emerg Infect Dis*. 2013;19(11):1892-1894. DOI:10.3201/eid1911.130792.
3. Chen H, Hu K, Zou J, Xiao J. A cluster of cases of human-to-human transmission caused by severe fever with thrombocytopenia syndrome bunyavirus. *Int J Infect Dis*. 2013;17(3) DOI:10.1016/j.ijid.2012.11.006.
4. Sun Y, Jin C, Zhan F, *et al*. Host cytokine storm is associated with disease severity of severe fever with thrombocytopenia

- syndrome. *J Infect Dis.* 2012;206(7):1085-1094. DOI:10.1093/infdis/jis452.
5. Jin C, Liang M, Ning J, *et al.* Pathogenesis of emerging severe fever with thrombocytopenia syndrome virus in C57/BL6 mouse model. *Proc Natl Acad Sci U S A.* 2012;109(25):10053-10058. DOI:10.1073/pnas.1120246109.