



ISSN (E): 2277- 7695  
ISSN (P): 2349-8242  
NAAS Rating: 5.23  
TPI 2021; 10(6): 926-929  
© 2021 TPI  
[www.thepharmajournal.com](http://www.thepharmajournal.com)  
Received: 02-03-2021  
Accepted: 10-05-2021

**Danam Shashibhushan**  
Seed Research and Technology  
Centre, PTJSAU, Rajendra  
Nagar, Hyderabad, India

**Ashish Reddy Muchanthula**  
Seed Research and Technology  
Centre, PTJSAU, Rajendra  
Nagar, Hyderabad, India

**T Pradeep**  
Seed Research and Technology  
Centre, PTJSAU, Rajendra  
Nagar, Hyderabad, India

**Corresponding Author:**  
**Danam Shashibhushan**  
Seed Research and Technology  
Centre, PTJSAU, Rajendra  
Nagar, Hyderabad, India

## Molecular finger printing and genetic purity assessment of a rice hybrid using microsatellite markers

**Danam Shashibhushan, Ashish Reddy Muchanthula and T Pradeep**

### Abstract

Evaluation of the genetic purity of a hybrid seed lot is essential due to the fact that the pure seed lot aids in attaining the maximum crop yield. Studies had already showed that 1% genetic impurity of rice can lead to a loss of 100 Kg grain yield per hectare. Therefore, it is necessary to maintain the genetic purity of a hybrid seed. Grow out test (GOT) and molecular marker test are two prominent purity testing methods followed across the world for the evaluation of the genetic purity of a seed lot. In the current study, a molecular test was conducted and compared with the grow out test to assess the genetic purity of the rice hybrid, JRH5. The SSR marker, RM276 was amplified on the DNA extracted from the rice hybrid, JRH5, and its parents, IR 68897A and JRR (N) 65. The amplification of marker was conducted on the DNA of 20 hybrid leaves and 1 leaf from each parent, separately. The marker was amplified at 110 bp in the parent, IR 68897A, and 140 bp in JRR (N) 65, and amplified at both the base pairs in their F1 progeny, JRH5. This confirms the hybridity of the rice hybrid, JRH5. The marker was unveiled in all the 20 leaves of the hybrid rice sample ensuring the purity of the seed lot. The grow out test results also showed 100% purity without any deviations. It concludes that molecular marker, RM276 is effective in hybrid purity evaluation of the rice hybrid, JRH5.

**Keywords:** Hybrid, genetic purity, molecular marker, SSR marker, primer

### 1. Introduction

Rice (*Oryza sativa*) is the staple food in most Asian countries. Bora *et al* (2016) [3] estimated that 90% of the global rice production is consumed by the Asian countries (Bora *et al.*, 2016) [3]. India, China, Indonesia, and Vietnam are some of the top rice-producing countries in the world. The demand for rice and processed rice products have been gradually increasing across the globe. According to FAO, the world witnessed a growth of 100 million metric tons of rice production in the last 10 years. Rout *et al.*, (2021) [15] reported that the evolution of hybrid rice cultivars is one of the major factors for such a drastic increase over the last few years. Hybrids have a yield advantage of 20% over the high-performing inbred lines (Huang *et al.*, 2020) [6] and have been widely cultivating in many regions. The total cultivation area of hybrid rice is anticipated to increase significantly in the coming years because of the increasing food demand.

Hybrid technology has been successfully utilizing in rice for many years but possesses few challenges (Spielman *et al.*, 2013) [17]. According to Li & Yuan, (2010) [9], maintaining the genetic purity of the seed lot is one of the major concerns in hybrid rice production as it is a self-pollinating crop. Mao *et al.*, (1998) [10] estimated that 1% of genetic impurity in rice can cause a 100 kg yield decline per hectare. Therefore, maintenance of genetic purity in the parental and hybrid lines of rice seed is essential. Chetan Kumar & Prasad (2012) [4] showed that genetic impurity in rice is majorly due to the presence of pollen shredders, outcross with foreign pollen, and mechanical mixtures. Hence, the purity test of the hybrid lines is done to identify the seed mixtures present in the seed lot. A genetic purity test is an inevitable procedure during the process of foundation and breeder seed certification. Highly qualified, and multiple purity tests have to be performed before the commercialization of any hybrid seed. Genetic purity test is usually conducted by two methods, Grow Out Test (GOT) and by using molecular markers. The former is time-consuming and laborious, whereas the latter one is relatively less time-consuming and more accurate (Nandakumar *et al.*, 2004) [12]. Bedoussac *et al.*, (2010) [2] reported that Currently, SSR (Simple Sequence Repeat) markers are the most popular molecular markers utilized for hybrid purity testing.

The major objective of the current study is to confirm the hybridity and test the genetic purity of the rice hybrid, JRH5 (IR 68897A × JRR (N) 65) using the SSR marker RM276.

## 2. Materials and Methods

### 2.1 Materials

The rice hybrid, JRH5 along with their parents was used for the purity test which was obtained from PJTS Agriculture University, Hyderabad. Four hundred seeds of the rice hybrid and 100 seeds of their parents were randomly drawn from the seed lot and sown in the field for grow out test. The sampling of leaves for the hybrid purity test was done by the two dimensional DNA sampling method given by Nas *et al* (2000). A sample of 20 leaves from different plants of the rice hybrid JRH5 has been collected from the field. Similarly, one leaf each was drawn from the parents and used for the molecular test. The experiment was conducted at the Seed Research and Technology Centre (SRTC), PJTS Agriculture University, Hyderabad.

### 2.2 DNA extraction

Total genomic DNA was extracted from Rice leaves by the CTAB method given by Murray and Thompson (1980) with some modifications. Approximately 3 seedlings of Rice was transferred to mortar and masticated to fine suspension with CTAB buffer (100 mM Tris, 20 mM EDTA, 1.4 M NaCl, 2% CTAB, pH 8.0). This fine suspension was taken into 2 ml Eppendorf tubes. These tubes were incubated in a water bath at 65°C for 40 minutes with intermittent mixing for every 15 minutes.

The incubated samples were allowed to attain room temperature and an equal volume of Chloroform: Isoamyl Alcohol (C:IAA= 24:1) was added, gently mixed for 15 minutes, and centrifuged at 10,000rpm for 5 minutes. The aqueous layer obtained is transferred to 1.5 ml Eppendorf tubes. To these tubes containing supernatant, an equal volume of chilled Isopropanol was added and gently mixed by inverting the tubes. These tubes were incubated in a refrigerator for 15 minutes and centrifuge at 10,000 rpm for 5 minutes. The supernatant obtained is discarded and the pellet is washed with 100µl of 70% Ethanol, followed by centrifugation at 10,000 rpm for 5 minutes. The pellet is air-dried and dissolved in 50-100 µl sterile distilled water/ T<sub>10</sub>E<sub>0.1</sub> buffer, where T<sub>10</sub>E<sub>0.1</sub> buffer facilitates for longer storage whereas sterile distilled water for shorter storage. The samples were stored in a -20 °C refrigerator for further use.

### 2.3 PCR and Gel electrophoresis

The SSR Markers RM276 was amplified with the 20 samples of the rice hybrid JRH5 and their parents. PCR and gel electrophoresis was conducted according to Lee *et al.*, (2012) [8]. The annealing temperature of SSR primer pairs was standardized using temperature gradient PCR (Surecycler

8800). 4 different temperatures were analyzed in the range of 50-60 °C and standardized at 54°C. PCR reactions were performed in 20µl volume using a programmable thermal cycler (Surecycler 8800, Agilent). The reagent mixture included a 2ng template DNA, 10 pmol of both forward and reverse primers, (IDT, Germany), 2µl of 10X PCR buffer (10Mm Tris-HCl (pH 8.0); 50mM KCl, 2mM MgCl<sub>2</sub>, 1U of *Taq* DNA polymerase (NEB, UK) 0.4mM dNTPs (Bangalore genei). Ten templates were taken per each primer and they were amplified using the following PCR program.

**Table 1:** The PCR temperature regime was as follows:

	Step	Temperature	Duration
1	Initial Denaturation	94 °C	5 minutes
2	Denaturation	94 °C	45 seconds
3	Annealing	54 °C	30 seconds
4	Extension	72 °C	30 seconds
5	Go to step 2-4 30 cycles		
6	Final extension	72 °C	8 minutes
7	14°C forever		

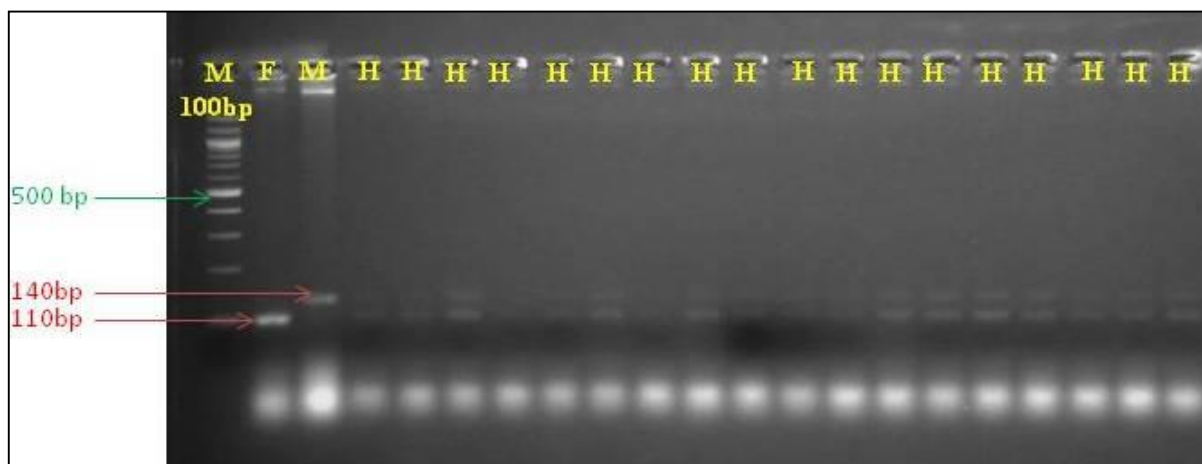
The PCR amplified product was mixed with 2µl of 6X single dye and loaded on 3.0% Agarose gel. The gels were electrophoresed at a constant voltage of 100 volts, 400mA for 90 minutes. Later the Ethidium bromide-stained gels were documented in the gel documentation system.

**Table 2:** Details of the rice hybrid and primer used in the study

Rice hybrid	Parents	Primer	Forward Sequence	Backward sequence
JRH5	IR 68897A and JRR (N) 65	RM276	CTCAACGTTG ACACCTCGTG	TCCTCCATCG AGCAGTATCA

## 3. Results and Discussion

Marker analysis on Agarose gel revealed that the SSR marker RM276 confirms the hybridity of the rice variety, JRH5, which is an F1 progeny of IR 68897A and JRR (N) 65. The marker was amplified at 110 bp in the parent, IR 68897A, and 140 bp in JRR (N) 65, but the marker was amplified at both the base pairs in its offspring, JRH5. The presence of marker at both the base pairs ensures that the rice cultivar JRH5 is a hybrid between the above-mentioned parents. All the 20 leaves of the rice hybrid sample showed the marker at both the base pairs validating the purity of the hybrid seed lot. The Grow out test performed during Rabi 2019 was also in alignment with the result of the marker test. In the Grow-out trials, purity evaluation was conducted based on the morphological characters such as days to flowering, days to maturity, pollen sterility, presence of awns on spikelet, panicle length, flag leaf senescence, and nodal pigmentation. All the characters showed 100% purity without any major deviations.



**Fig 1:** Amplification pattern obtained using SSR marker RM276 Lane M: 100bp DNA ladder; Lane F: IR 68897A; Lane M: JRR (N) 65; Lane H: JRH5

Genetic purity test during various stages of breeding and before hybrid release is mandatory to avoid any impurities in the seed lots. (Anupama *et al.*, 2020)<sup>[1]</sup> and Deshmukh *et al.*, (2013)<sup>[5]</sup> proved that molecular markers are efficient than the field test in the genetic purity studies. Many markers were identified to confirm the hybridity and check the genetic purity of hybrid rice lines. For example, Sundaram *et al.*, (2008)<sup>[18]</sup> identified 48 SSR markers and marker combinations, which recognized 10 CMS and restorer lines along with the hybrids. Kumar *et al.*, (2021)<sup>[7]</sup> also found 14 markers, that are specific to 16 high yielding rice varieties. Singh *et al.*, (2015)<sup>[16]</sup> reported that apart from genetic purity, the presence of a validated marker on the hybrid DNA also proves the hybridity of a line between specific parents and also differentiates the hybrid from its parents. Thus hybrid purity tests can be useful in multiples ways such as confirming hybridity, testing genetic purity, and separating self and cross-pollinated lines (Pallavi *et al.*, 2011)<sup>[14]</sup>. The SSR Marker, RM276 has been already identified as specific to the hybrid rice line, JRH5, and its parents. The current study had reconfirmed that the marker RM276 is the indicator of the hybrid rice line, JRH5. The study clearly depicts that application of SSR markers for hybrid purity test is one among the best methods for the seed purity test.

#### 4. Conclusion

The presence of RM276 SSR marker at 110 bp and 140 bp in the parents, IR 68897A, and 140 bp, respectively and at both the base pairs in it hybrid, JRH5 confirms the hybridity of the rice hybrid, JRH5. The presence of marker at both the base pairs in all the samples tested ensures the hundred percent purity of the seedlot.

#### 5. References

- Anupama K, Pranathi K, Meenakshi Sundaram R. Assessment of genetic purity of bulked-seed of rice CMS lines using capillary electrophoresis. *Electrophoresis* 2020;41(20):1749-1751.
- Bedoussac L, Matura M, Dehant E, Hemptinne JL, Justes E, Gate P *et al.* *Bch. Field Crops Research* 2010;115(3):294-299.
- Bora A, Choudhury PR, Pande V, Mandal AB. Assessment of genetic purity in rice (*Oryza sativa* L.) hybrids using microsatellite markers. *3 Biotech* 2016;6(1):1-7.
- Chetan Kumar M, Prasad RS. Utilization of SSR Markers for Seed Purity Testing in Popular Rice Hybrids (*Oryza sativa* L.). *Annals of Plant Sciences* 2012;1(1):1-5.
- Deshmukh UC, Saxena RR, Xalxo MS, Sharma D, Verulkar SB. Hybrid purity testing in rice (*Oryza sativa* L.) using microsatellite markers. *Electronic Journal of Plant Breeding*, 2013;4(1):1021-1026.
- Huang ZY, Lv QM, Xin YY, Yuan LP, Fu XQ, Zhu LH, *et al.* Heterotic performance of the main yield traits in different types of Indica hybrid rice. *Food and Energy Security* 2020;9(3):e210.
- Kumar SPJ, Susmita C, Agarwal DK, Pal G, Rai AK, Simal-Gandara J. Assessment of Genetic Purity in Rice Using Polymorphic SSR Markers and Its Economic Analysis with Grow-Out-Test. *Food Analytical Methods* 2021;14(5):856-864.
- Lee PY, Costumbrado J, Hsu CY, Kim YH. Agarose gel electrophoresis for the separation of DNA fragments. *Journal of Visualized Experiments* 2012;62:3923.
- Li J, Yuan L. Hybrid Rice: Genetics, Breeding, and Seed Production. In *Plant Breeding Reviews* 2010;15:158.
- Mao C, Virmani S, Kumar I. Technological innovations to lower the costs of hybrid rice seed production. *Advances in Hybrid Rice Technology* 1998;36(2):111-128.
- Murray MG, Thompson WF. Rapid isolation of high molecular weight plant DNA. *Nucleic Acids Research* 1980;8(19):4321-4326.
- Nandakumar N, Singh AK, Sharma RK, Mohapatra T, Prabhu KV, Zaman FU. Molecular fingerprinting of hybrids and assessment of genetic purity of hybrid seeds in rice using microsatellite markers. *Euphytica* 2004;136(3):257-264.
- Nas TMS, Toledo RS, Li Z, Virmani SS. (n.d.). Two-dimensional DNA sampling: a new strategy for assessment of hybridity using molecular markers. International Rice Research Inst., Los Banos, Laguna (Philippines). Plant Breeding, Genetics and Biochemistry Div 2020. Retrieved March 17, 2021, from <https://agris.fao.org/agris-search/search.do?recordID=PH2001100487>
- Pallavi HM, Gowda R, Shadakshari YG, Bhanuprakash K, Vishwanath K. Identification of SSR markers for hybridity and seed genetic purity testing in sunflower (*Helianthus annuus* L.). *Helia* 2011;34(54):59-66.

15. Rout D, Jena D, Singh V, Kumar M, Arsode P, Singh P, *et al.* Hybrid Rice Research: Current Status and Prospects. In Recent Advances in Rice Research. Intech Open 2021.
16. Singh C, Rajkumar, Kumar V, Patel DH, Patil VR DNA Fingerprinting of Upland Cotton (*Gossypium hirsutum*) Hybrids and their Parents Using RAPD and SSR Markers. International Journal of Bio-Resource and Stress Management 2015;6(6):728.
17. Spielman DJ, Kolady DE, Ward PS. The prospects for hybrid rice in India. Food Security 2013;5(5):651-665.
18. Sundaram RM, Naveenkumar B, Biradar SK, Balachandran SM, Mishra B, Ilyasahmed M *et al.* Identification of informative SSR markers capable of distinguishing hybrid rice parental lines and their utilization in seed purity assessment. Euphytica 2008;163(2):215-224.