



ISSN (E): 2277-7695
ISSN (P): 2349-8242
NAAS Rating: 5.23
TPI 2022; 11(7): 701-706
© 2022 TPI
www.thepharmajournal.com
Received: 02-04-2022
Accepted: 26-06-2022

Vineet Kumar Dwivedi
Student, Department of
Agronomy, AKS University,
Sherganj, Satna, Madhya
Pradesh, India

Dr. T Singh
Professor and Head, Department
of Agronomy, AKS University,
Sherganj, Satna, Madhya
Pradesh, India

Prachi Awadhiya
Research Scholar, Department of
Agronomy, AKS University,
Sherganj, Satna, Madhya
Pradesh, India

Amit Singh Tiwari
Research Scholar, Department of
Agronomy, AKS University,
Sherganj, Satna, Madhya
Pradesh, India

Sanjay lilhare
Research Scholar, Department of
Agronomy, AKS University,
Sherganj, Satna, Madhya
Pradesh, India

Corresponding Author:
Vineet Kumar Dwivedi
Student, Department of
Agronomy, AKS University,
Sherganj, Satna, Madhya
Pradesh, India

Integrated nutrient management (INM) on yield and quality of Black Gram (*Vigna mungo* L.)

Vineet Kumar Dwivedi, Dr. T Singh, Prachi Awadhiya, Amit Singh Tiwari and Sanjay Lilhare

Abstract

In order to explore the possibility of increasing yield, quality and economics of black gram (*Vigna mungo* L.) Therefore, the present investigation was conducted during Kharif season of 2019-2020 at the instructional farm, AKS University, Sherganj, Satna by adopting RBD design. Among the treatment application of 100% RDF (20:40:20 Kg. NPK/ha) was one of the important INM treatment which further caused pronounced response towards enhancement of yield, quality and economics of black gram. The highest grain yield (12.83 Kg/ha), straw yield (38.00 Kg/ha), Biological yield (50.83 Kg/ha), harvest index (25.22%), protein content (24.85%), Cost of cultivation (22053 Rs.), Gross monetary return (80731 Rs.), Net monetary return (63456 Rs), Benefit cost ratio (1:3.67) were recorded when 100% RDF (20:40:20 NPK Kg/ha) was applied in Black gram.

Keywords: Black gram, INM, yield and attributes and economics of production

Introduction

Black gram (*Vigna mungo* L.) also known as urd bean being early maturing and short-duration pulse crop is being grown in an area of 31.9 lakh ha. With a production of 19.0 lakh tonnes and productivity of 596 kg/ha (Krishnaprabhu *et al.* 2018) ^[10]. Black gram is a self-pollinated leguminous crop which is grown during kharif as well as summer seasons in arid and semi-arid regions of India.

Integrated nutrient management improve soil fertility, productivity and many other agronomic aspects of crop production, such as water retention capacity in the soil and disease and pest control, all of which would contribute to increase the crop yields. The appropriate combination of chemical fertilizers and organic manure with biofertilizers may be feasible and visible to sustain agriculture as commercial and profitable crop without deterioration in quantity and quality of the produce.

Material and Method

A field experiment was carried out at experimental farm, AKS University, Satna during 2019-20. The soil based on chemical composition low in organic carbon (0.43 g.), Available nitrogen (176.5 kg/ha.), Available phosphorous (12.4 kg/ha), available potassium (200.0 kg/ha) with soil pH (7.5) and electrical conductivity (0.16 ds/m). The soil sample based on pH, electrical conductivity, Organic carbon content, available N, P, K. The experiment was laid out in Randomized Block Design with nine treatments and three replications. The treatment used was as follows; Control, 100% RDF (20:40:20 NPK kg/ha); (90% RDF +2t FYM/ha); (45% RDF +4t FYM/ha); (50% RDF + 5t FYM/ha); (45% RDF + 4t FYM/ha+Rhizobium); 45% RDF+6t FYM/ha+800 g. Molybdenum/ha); (2t FYM/ha+Rhizobium+ 800g. Molybdenum/ha); (4tFYM/ha+Rhizobium+800 g. Molybdenum/ha).

Table 1: Yield and quality of black gram due to use different INM treatment

Treatment	Grain yield (Kg/ha)	Straw yield (Kg/ha)	Biological yield (Kg/ha)	Harvest index %	Protein content (%)	Cost of cultivation (Rs/ha)	Gross monetary return (Rs/ha)	Net monetary return (Rs/ha)	B:C ratio
T ₁ =Control	7.33	26.98	34.31	21.39	20.97	14690	47177	32487	1:2.21
T ₂ = 100% RDF (20:40:20 NPK kg/ha)	12.83	38.00	50.83	25.22	24.85	22053	80731	63456	1:3.67
T ₃ = 90% RDF +2t FYM/ha	11.39	35.77	47.16	24.15	23.52	19016	72077	53061	1:2.79
T ₄ = 45% RDF +4t FYM/ha	8.35	30.04	38.39	24.76	21.62	20913	53603	33750	1:1.70
T ₅ = 45% RDF + 5t FYM/ha+Rhizobium	8.58	30.86	39.44	21.73	21.74	20042	55078	34165	1:1.63
T ₆ = 50% RDF + 4t FYM/ha+Rhizobium	9.63	33.15	42.78	22.52	23.24	22053	61521	41479	1:2.07
T ₇ = 45% RDF+6t FYM/ha+800 gm. Molybdenum/ha	10.15	34.18	44.33	22.88	23.27	16950	64691	42638	1:1.93
T ₈ = 2t FYM/ha+Rhizobium+800gm.Molybdenum/ha	7.58	26.99	34.58	21.94	21.49	17275	48604	31654	1:1.87
T ₉ = 4tFYM/ha+Rhizobium+800 g. Molybdenum/ha	7.67	27.03	34.70	22.12	21.55	18950	49125	30175	1:1.59
S.Em +	0.27	0.62	0.80	0.42	0.42	--	--	--	--
CD (P= 0.05)	0.79	1.82	2.34	1.23	1.23	--	--	--	---

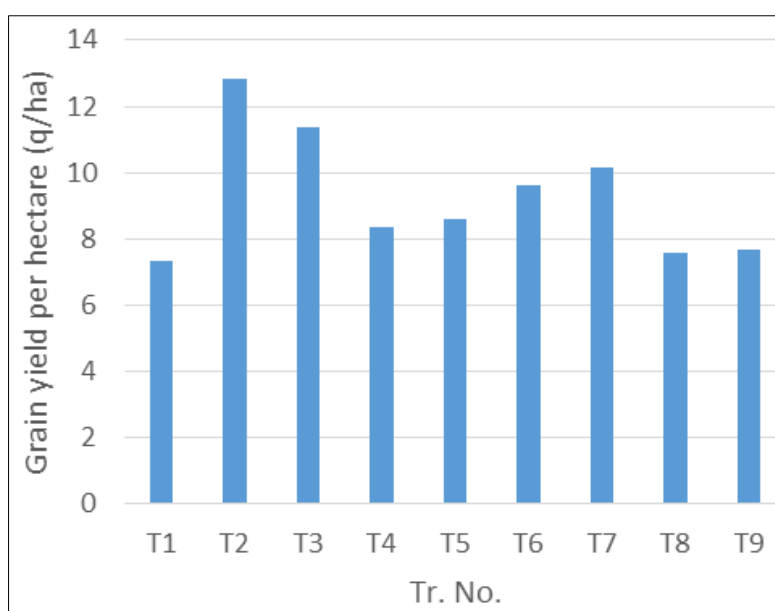


Fig 1: Grain yield per hectare of black gram as influenced by different integrated nutrient management treatments (q/ha)

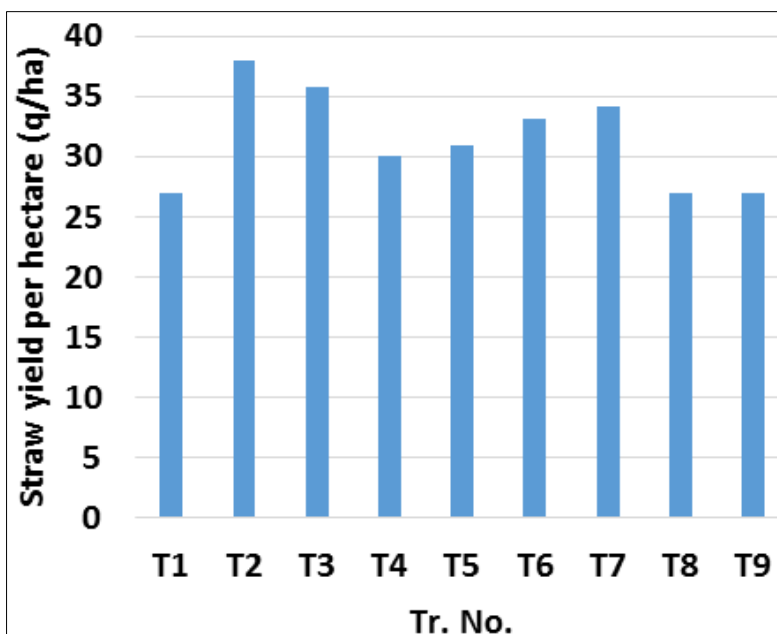


Fig 2: Straw yield per hectare of black gram as influenced by different integrated nutrient management treatments (q/ha)



Fig 3: Biological yield per hectare of black gram as influenced by different integrated nutrient management treatments (q/ha)

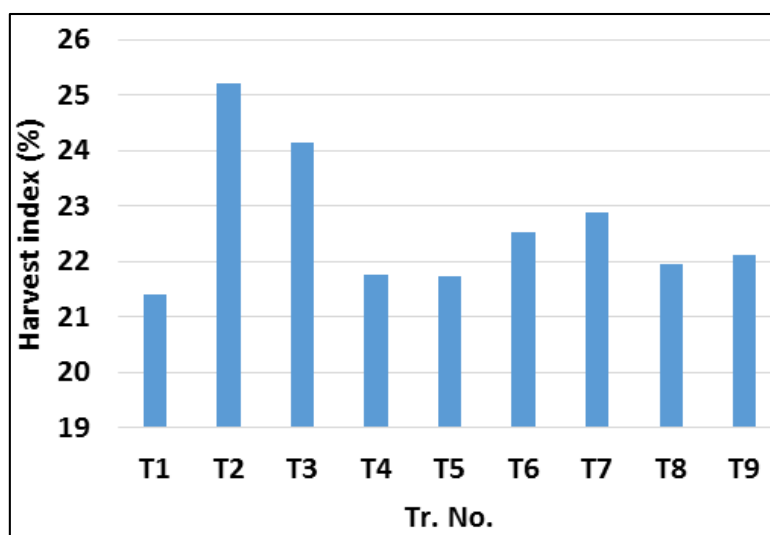


Fig 4: Harvest index of black gram as influenced by different integrated nutrient management treatments (%)

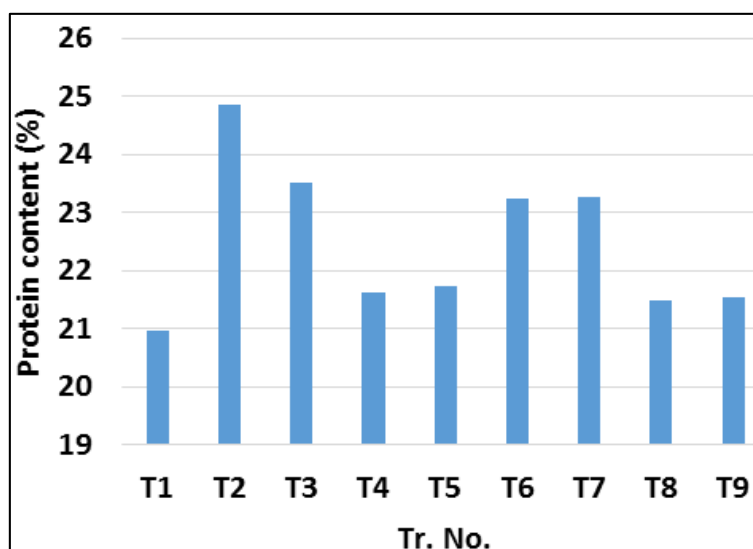


Fig 5: Protein content of black gram as influenced by different integrated nutrient management treatments (%)

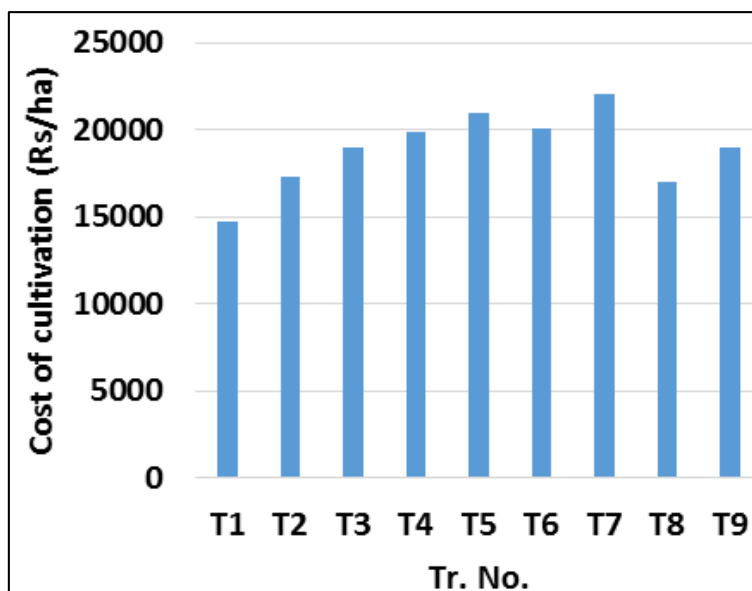


Fig 6: Cost of cultivation of black gram as influenced by different integrated nutrient management treatments (Rs/ha)

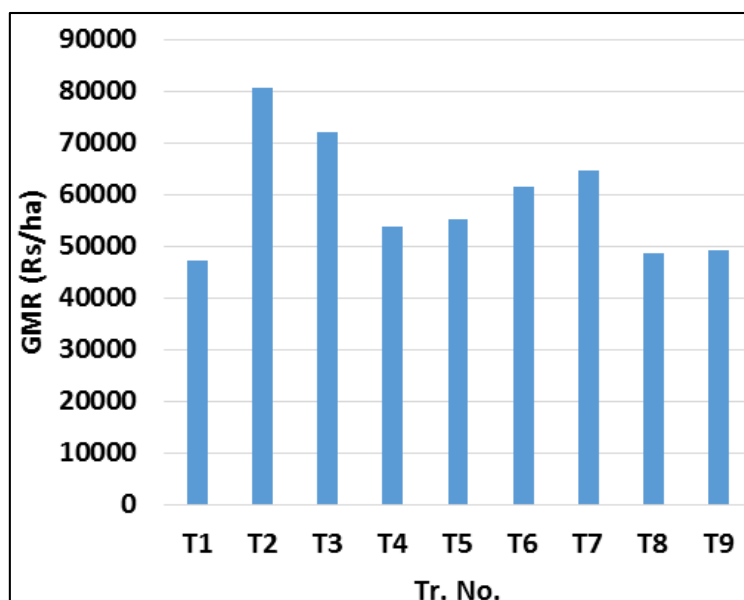


Fig 7: Gross monetary return (GMR) of black gram as influenced by different integrated nutrient management treatments (Rs/ha)

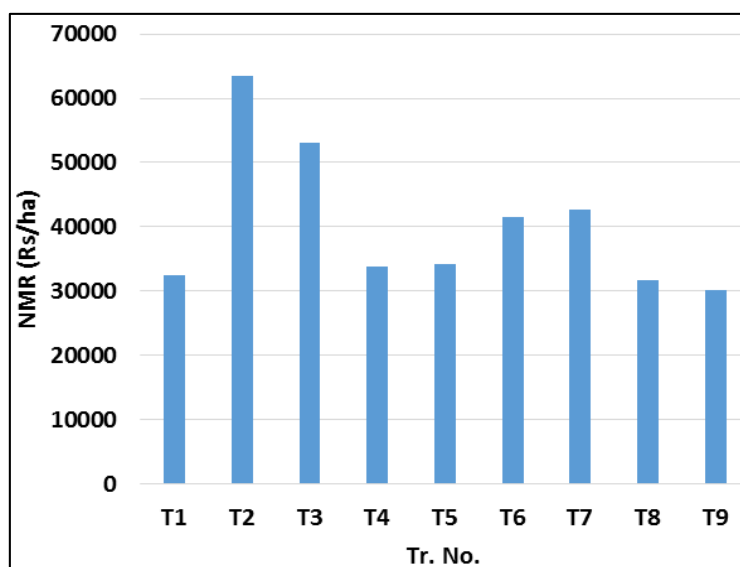


Fig 8: Net monetary return (NMR) of black gram as influenced by different integrated nutrient management treatments (Rs/ha)

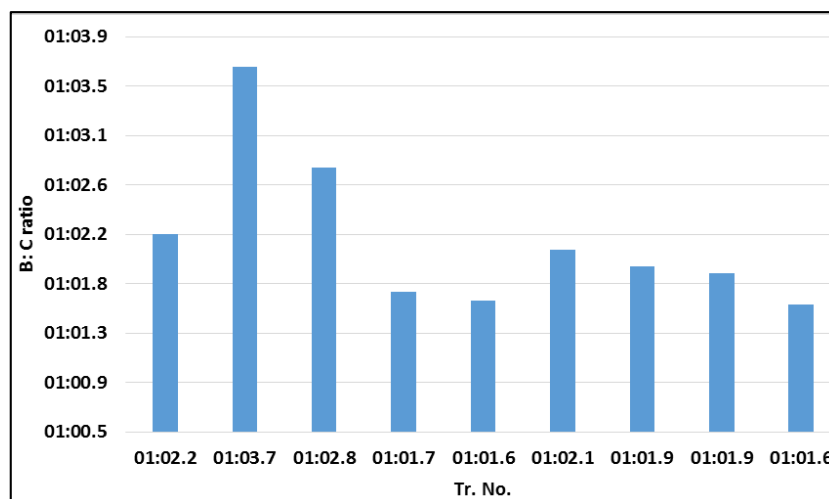


Fig 9: B: C ratio of black gram as influenced by different integrated nutrient management treatments

Result and Discussion

An examination of data portrayed in table – 1 obviously indicated the use of different INM treatment and brought tremendous increase in yield, and yield attributes such as grain yield q/ha (12.83), straw yield (38.00 q/ha) was noticed by the use of 100% RDF (20:40:20 NPK/ha). However, biological yield (50.83 Kg/ha) was also pushed up tremendously when 100% RDF that is 20:40:20 NPK/ha was incorporated. The quality parameters such as protein content was also obviously enhanced due to use of 100% RDF NPK (20:40:20 NPK/ha). Economics of cost of production was also further obtained that maximum cost of cultivation i.e. 22053 rupees/ha was involved by the application of 100% RDF (20:40:20 Kg NPK/ha). However maximum gross monetary returns i.e. (80731 Rs/ha), Net monetary returns Rs (63456 Rs/ha) and B:C ratio i.e. (1:3.67) due to use of 100% RDF (20:40:20 kg NPK/h

Summary and Conclusion

1. The significant higher yield (q/ha), straw yield (q/ha) and biological yield per/ha of black gram was recorded under the application of 100% with respective values of 12.83 q., 38.00 q. and 50.83 q/hq respectively which proved to be significantly superior to rest among the treatment.
2. The significant highest harvest index of black gram was recorded under the application of 100% RDF with respective value of 25.22% which proved to be significantly superior to rest among the treatment.
3. The significant highest protein content of black gram was recorded under the application of 100% RDF with the respective value of 24.85% which proved to be significantly superior to rest among the treatment.
4. The significant highest cost of cultivation 22053.00/ha was recorded under the application of 45% RDF+6t FYM/ha+molybdenum@800 g/ha, while highest gross monetary return (80731.00/ha), Net monetary return (63456.00/ha) and B:C ratio of 1:3.67 of Black gram was recorded under the application of 100% RDF, respectively which proved to be significantly superior to rest among the treatment.

Acknowledgement

First author is very much thankful to Dr. T. Singh Prof. and Head Agronomy, AKS University, Satna for very kindly

providing all the experimental facility and suggestion for Successful conduct of the experiment and help in preparation of manuscript.

References

1. Hakeem SA, Thomas T, Shagufta W. Effect of different levels of neem cake and biofertilizer on properties of soil, nutrient status and grain yield of black gram (*Vigna mungo* L.) type - 9. Plant Archives. 2007;7(2):847-849.
2. Kumpawat BS. Integrated nutrient management in black gram (*Vigna mungo*) and its residual effect on succeeding mustard (*Brassica juncea*) crop. Indian Journal of Agriculture Science. 2010;80(1):76-79.
3. Kannan M, Ganesan P. Effect of organic and inorganic fertilizers on the productivity of black gram. Journal of Plant Science Research. 2011;27(2):139-141.
4. Marko GS, Kushwaha HS, Seema Singh Namdeo KN, Sharma RD. Effect of sulphur and biofertilizers on growth, yield and quality of black gram (*Phaseolus mungo* L.). Crop Research (Hisar). 2013;45(1/3):175-178.
5. Amurita N, Maruthi JB, Sarika G, Deepika C. Effect of Integrated Nutrient Management and Spacing on Growth and yield Parameter of black gram CV. LBG-625 (RASHMI), the bioscan. 2015;10(1):193-198.
6. Piper CS. Soil and plant analysis. Inter Sciences Publisher Inc. New York USA. 1950.
7. Rathi BK, Jain AK, Kumar S, Panwar JDS. Response of *Rhizobium* inoculation with sulphur and micronutrients on yield and yield attributes of black gram (*Vigna mungo* L. Hepper). Legume Research. 2009;32(1):62-64.
8. Singh VK, Sharma BB, Sahu JP. Effect of organic and inorganic sources of nutrients on black gram productivity. Journal of Food Legumes. 2008a;21(3):173-174.
9. Sutaria GS, Akbari KN, Vora VD, Padmani DR. Residual effect of nutrient management on the soil fertility and yield of black gram under dryland conditions. Legume Research. 2011;34(1):62-64.
10. Krishnaprabhu S. Integrated nutrient management for sustaining the productivity of irrigated blackgram. Journal of Emerging Technologies and innovates research (JETIR), 2012, 5(8), ISSN-2349-5162
11. Singh VK, Sharma BB, Sahu JP. Effect of organic and

- inorganic sources of nutrients on black gram productivity. *Journal of Food Legumes*. 2008a;21(3):173-174.
12. Trivedi Amit, Sharma SK, Ameta OP, Sharma SK. Management of viral and leaf spot disease complexes in organic farming of black gram. *Indian Phytopathology*. 2014;67(1):97-101.
 13. Vavilov NI. The Origin, variation, immunity and breeding of cultivated plants. Ed. Tranil, K.S. Chester, Roland Press Company, New York. 1951, 45-47.
 14. Vairavan K. Integrated nutrient management in rabi black gram. *Madras Agricultural Journal*. 2011;98(10/12):367-369.